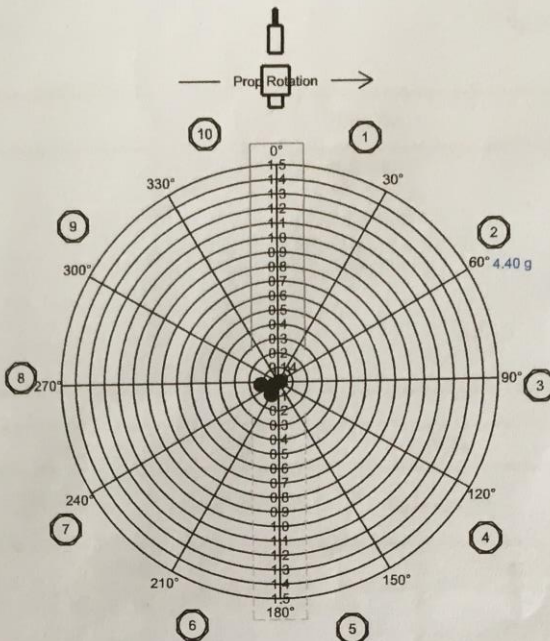
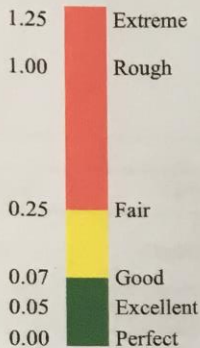
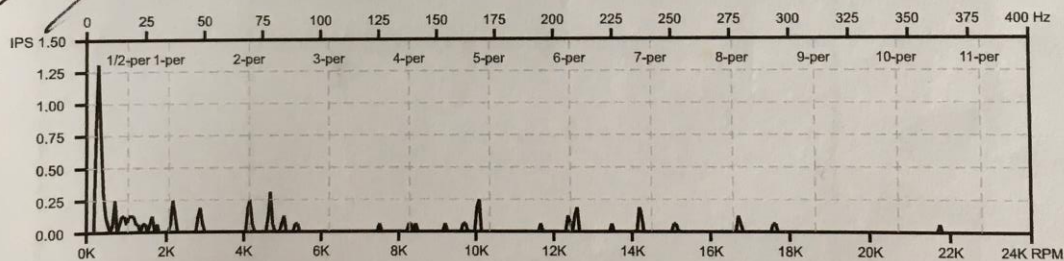


Aircraft: N1769K
 Owner:
 Position: 1
 Engine: 912
 HP (est.): 90
 Propeller: Not Specified
 Date: 4/24/2019 15:50



Final Reading: 0.01 IPS
 Final Weights: 4.40 g @ 56°

Mechanic &
 Cert Number: 3439407



Run #	Magnitude	Phase	Trim Wt 1	Trim Wt 1	Trim Wt 2	Trim Wt 2	Comments
1	0.12 IPS	261°	4.40 g	92°	--	--	
2	0.10 IPS	209°	4.40 g	56°	--	--	
3	0.04 IPS	234°	4.40 g	56°	--	--	
4	0.01 IPS	85°	--	--	--	--	Final Value

Per AC20-37E: Install a placard on the propeller hub or bulkhead stating that the propeller has been dynamically balanced and the assembly of the power train rotating components is an indexed assembly. Make an entry in the logbook with the date, engine hours, final balance vibration, location of the dynamic balance weights, signature and certificate number of the maintenance person.

For balancing tips, see www.rpxtech.com/dv-tips

Balanced with DynaVibe model GX3 by RPX Technologies, Inc. www.rpxtech.com
 Serial number: D17081601GX3 | Firmware version: 1.13
 Report template revised: 2016-12-12